

TPEA Lifter is an innovative solution for effective laparoscopic retraction. It is incision-less and provides optimal surgical exposure.

TPEA Lifter

Port-Free Internal Retractor

TPEA Lifter

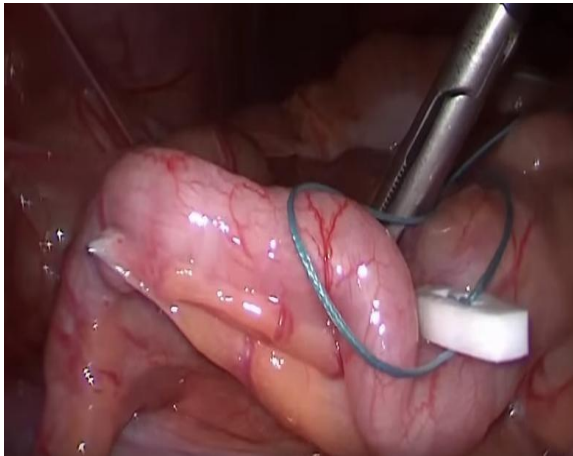
PORT-FREE INTERNAL RETRACTOR

PRODUCT INTRODUCTION



TPEA Lifter is a disposable retractor used to lift organs during laparoscopic procedures. It creates greater space in the abdomen and, improves visibility during the procedure - moving organs or tissues out of the way and, reduces the amount of devices needed in the field.

The TPEA Lifter has a firm, large contact surface and equal pressure distribution design. TPEA Lifter allows up to 2Kg of retraction force, in order to suspend and manipulate the organ.



TPEA Lifter is currently used to suspend the following organs: uterus, sigmoid colon, peritoneum, stomach, gallbladder, bladder - and is fully compatible with robotic procedures.

TPEA Lifter can replace other devices (i.e. uterine manipulator) in selected procedures, minimizing the uterine cannulation associated risks while giving the surgeon excellent control of the surgical field - in his/her own hands.

TPEA Lifter

PORT-FREE INTERNAL RETRACTOR

PRODUCT BENEFITS

- Easy to use, rapid set-up
- Fully internal system – no incision, eliminates port dedicated to retraction
- Hands-free solution for optimal surgical field exposure
- Shortened procedure / operating room time
- Fully compatible with robotic procedures
- Adjustable traction, as required by procedure
- Prevents instrument and robotic arm interference
- Reduced patient discomfort and scarring, better cosmetic result
- Two needle lengths to accommodate different abdominal wall thicknesses

TPEA Lifter

PORT-FREE INTERNAL RETRACTOR

Coated polyester
suture for strong traction

Silicone stabilization
device for strong,
atraumatic organ
suspension/retraction

Triangular needle with
tapered precision tip for
optimal tissue penetration

**Needle is available in 5cm
and 6.5cm lengths.**

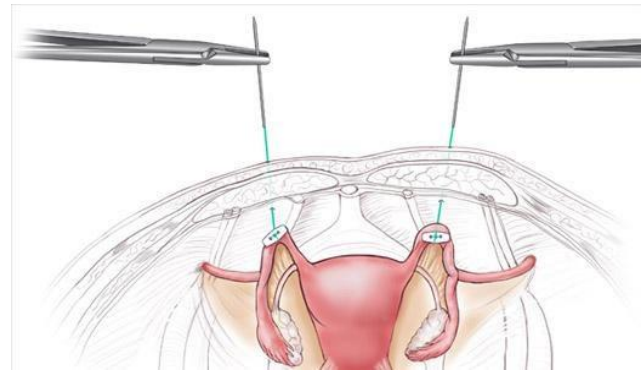
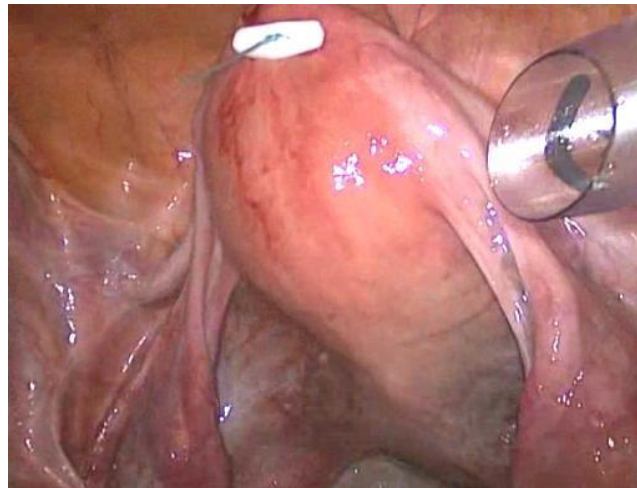
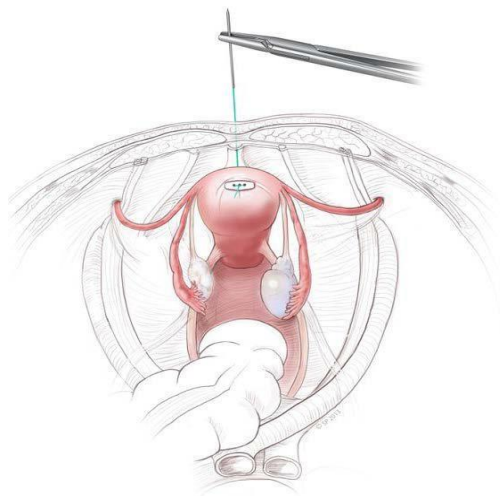
**6.5cm for bariatric
procedures or thicker
abdominal walls**



TPEA Lifter

PORT-FREE INTERNAL RETRACTOR

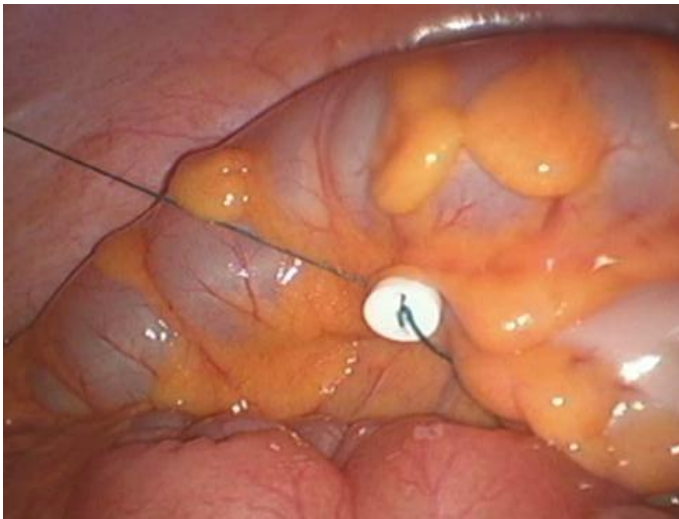
APPLICATION: Uterus & Adnexa Suspension



TPEA Lifter

PORT-FREE INTERNAL RETRACTOR

APPLICATIONS



Sigmoid Colon Retraction

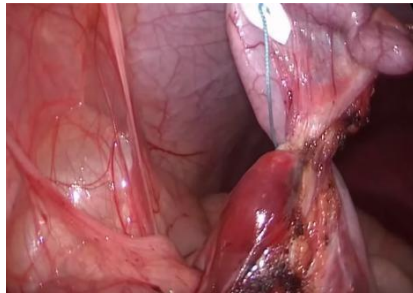
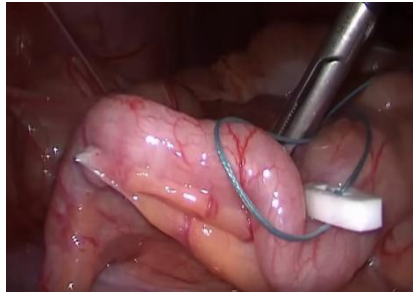


Temporary Mesh Positioning

TPEA Lifter

PORT-FREE INTERNAL RETRACTOR

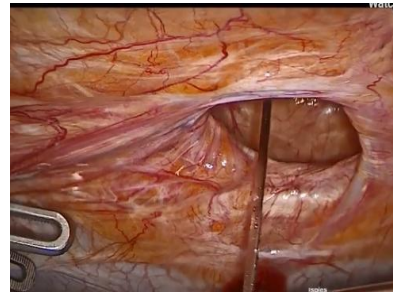
APPLICATION: Reduced Port Appendectomy



TPEA Lifter

PORT-FREE INTERNAL RETRACTOR

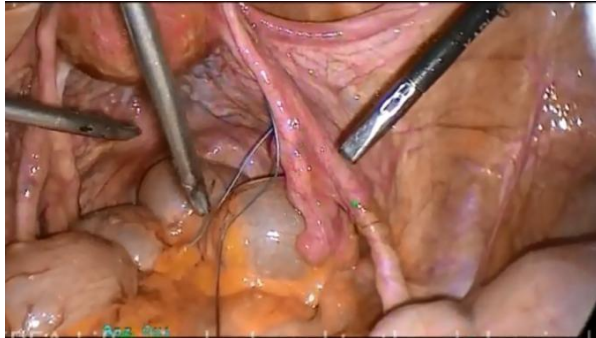
APPLICATION: Temporary Mesh Fixation in Lap. Hernia Repair



TPEA Lifter

PORT-FREE INTERNAL RETRACTOR

APPLICATION: Rectal (Colon) Vaginal Prolapse



TPEA Lifter is deployed into the abdominal cavity through a 5mm (or greater) port



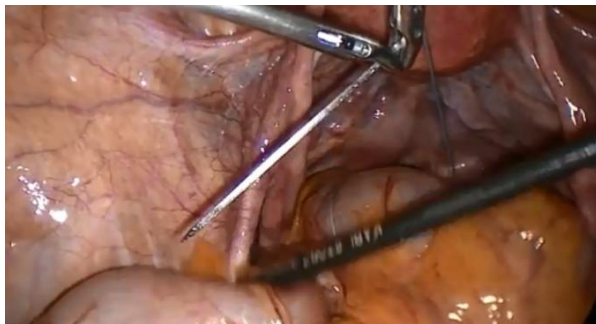
The retracted tissue can be stitched once...



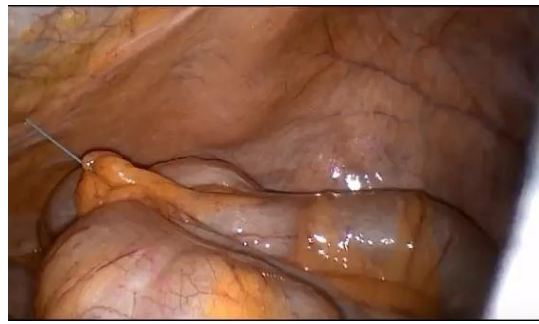
Twice...



Or more...



Exit point is located, needle is passed through the abdominal wall



Tissue is safely retracted away from the surgical field



Suture is secured using a hemostat once desired retraction is achieved

TPEA Lifter

PORT-FREE INTERNAL RETRACTOR

Possible Extra-Abdominal Needle Management



TPEA Lifter

PORT-FREE INTERNAL RETRACTOR

TIPS & TRICKS: TO AVOID PITFALLS

- Put the needle into the trocar first, grab it internally with a needle holder or coarse grasper, view where it is/goes and only then pull the silicone disk through, to avoid needle stick injury intra-abdominally
- When exiting the abdominal cavity, make sure no one is touching the area of exit, to avoid needle-stick injury.
- Take and remove the exiting needle with a needle holder or coarse clamp, to avoid damaging fine mosquitos.
- When clamping the suture, make one or more turns around the clamp's tip, before closing the ratchet.

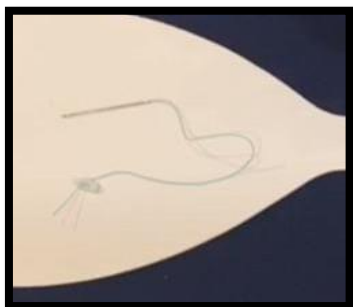


TPEA Lifter

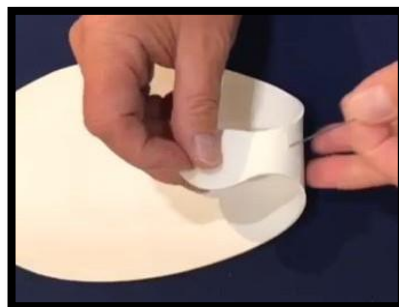
PORT-FREE INTERNAL RETRACTOR

HOW TO DEMONSTRATE

- Make sure you use a prop/object to demonstrate the product on, e.g. a Surgeons Sturgeon (see below)
- When handing product over, make sure to *offer the needle with the blunt /sutureside*. Never point/pass the needle tip first
- Have a laparoscopic grasper present, a DeBakey or Hunter type suits clip maneuvering best
- Use the 'tail' of the SS to show how strong it can hold tissue. Let the interested person feel the atraumatic suture – it does not tear tissue when pulled through



TPEA Lifter is highly suitable for colon or uterine retraction



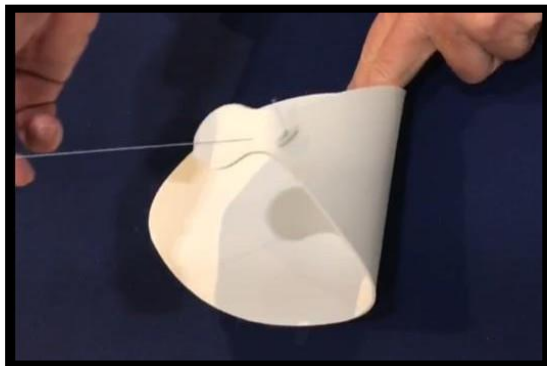
End of SS is used to mimic a uterine fundus



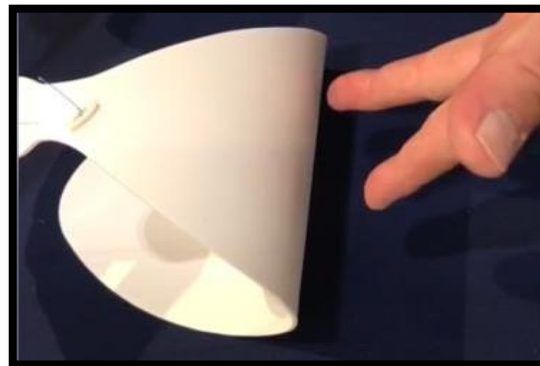
Use a needle holder or forceps to push needle through the tissue



TPEA silicone disc provides strong, atraumatic tissue retraction



TPEA Lifter takes the uterus out of the way



Retraction is achieved by pulling on the suture – making sure you have access under the uterus.

The needle is passed through the abdominal wall and suture is clamped by a mosquito - to be held in place

TPEA Lifter

PORT-FREE INTERNAL RETRACTOR

OVERVIEW OF PRODUCT BENEFITS

Cost-Effective

- low-cost disposable device
- eliminates purchase, care and maintenance of several retractor instruments for back-to-back cases
- Reduces one trocar
- Eliminates one robotic arm dedicated to retraction

Improved Efficiency

- rapid set-up
- hands-free solution for effective retraction
- reduces procedure and OR time
- eliminates staff person dedicated to retraction
- prevents instrument and robotic arm interference

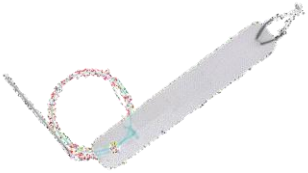

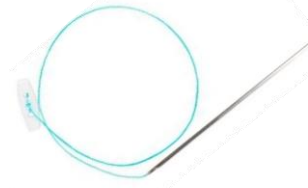
Improved quality of care

- less traumatic to organ / tissue being retracted
- reduced healing time and discomfort
- better cosmetic result

TPEA Lifter

PORT-FREE INTERNAL RETRACTOR

PRODUCT LINE SELECTION GUIDE

Product Type	Product Image	Product Code / Specification	Static Retraction	Dynamic Retraction	Liver Suspension	Bariatric
Versa Lifter Band		VBN10A05 5.0cm Needle	✓		✓	
		VBN10X05 6.5cm Needle	✓		✓	✓
Versa Lifter Needle		VN10A05 5.0cm Needle	✓	✓		
		VN10X05 6.5cm Needle	✓	✓		✓
TPEA Lifter		TPL5A180-B10 5.0cm Needle	✓			
		TPL5X180-B10 6.5cm Needle	✓			✓

TPEA Lifter

PORT-FREE INTERNAL RETRACTOR

STERILE PACKAGING



10 individually wrapped products per box

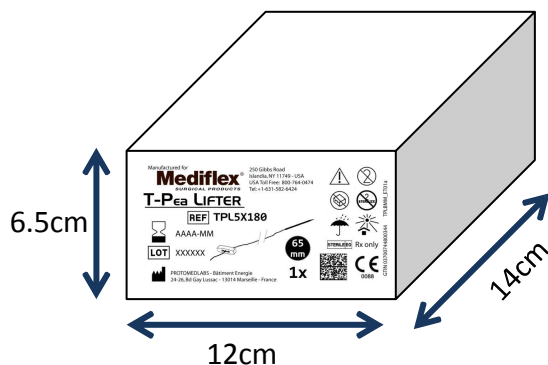


TPEA Lifter

PORT-FREE INTERNAL RETRACTOR

ORDERING INFO & BOX PACKAGING

REF. NO.	DESCRIPTION	MINIMUM TROCAR SIZE	UOM
TPL5A180-B10	TPEA Lifter – 5cm Needle, 18cm Suture 15 x 5mm Elongated Silicone Device	5mm	10/Box
TPL5X180-B10	TPEA Lifter – 6.5cm Needle, 18cm Suture 15 x 5mm Elongated Silicone Device <i>(for bariatric or thicker abdominal wall)</i>	5mm	10/Box



TPEA Lifter

PORT-FREE INTERNAL RETRACTOR

GENERAL INFO

PRODUCT DESCRIPTION	TPEA Lifter is a disposable intra-abdominal retractor that allows for lifting or retraction of biological tissue for maximum operating field exposure during laparoscopic surgery
INTENDED PURPOSE	To lift/retract organs/tissue for maximum surgical field viewing
ITEM NUMBERS	TPL5A180-B10 – TPEA Lifter, 15x5mm Device, 5cm Needle TPL5X180-B10 – TPEA Lifter, 15x5mm Device, 6.5cm Needle
UOM	Box of 10
HOW SUPPLIED	<ul style="list-style-type: none">▪ Packaged sterile▪ Single-use, disposable▪ Does not require capital equipment
MATERIALS	<ul style="list-style-type: none">▪ Stainless Steel (needle)▪ Coated Polyester (suture)▪ Silicone (button device) <p><u>Does not contain mercury or latex</u></p>

TPEA Lifter

PORT-FREE INTERNAL RETRACTOR

TARGET USER / SPECIALTY	Laparoscopic surgeons: general / colo-rectal surgery, GYN, urologic, bariatric, robotic procedures
WHERE WILL IT BE USED	Operating room / theater
CLINICAL INDICATIONS	Organ/tissue retraction during laparoscopic surgery
CLINICAL BENEFITS	Low-cost, low-profile, sterile retractors which are ready to use and easy to use. Eliminates a port/robotic port and assistant/robotic arm dedicated to retraction – all saving time and money. Improved efficiency and quality of care.
CONTRA-INDICATIONS	Surgeon is responsible for the choice of biological tissue(s) to be retracted and its piercing location.
WHAT IT REPLACES	<ul style="list-style-type: none">▪ Staff dedicated to manually hold retraction/instrument▪ Robotic arm dedicated to retraction▪ Laparoscopic instrument that needs to be cleaned, sterilized and maintained



MedSurgeTek Inc.

COMBINING TECHNOLOGY